

# ELEGANCE

## Laminate Flooring



### FX WARRANTY GUIDE

FX Laminate flooring is produced according to standard GB/T 18102-2007

#### Key Installation Criteria

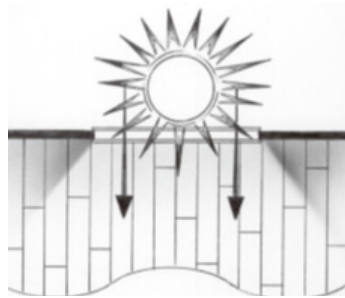
- Inspect every plank for defects and color or sheen differences under good light conditions before installation. Always work out of multiple boxes to mix product to achieve proper pattern repeat.
- Laminate flooring must be allowed to acclimate to the environment of the installation area. Leave the closed packages in a horizontal position in the room for 48 hours prior to installation. Preferable temperature should be approximately 17-23 with a relative humidity of 45-60 percent.
- If the place to install the flooring is more than 25 , keep more ventilation of the room during and after installation, try to avoid the room temperature up to 40 but without ventilation;
- Use a vapor barrier when installing over concrete below grade or in moisture prone areas. Test for moisture in concrete prior to installation. Too much moisture can cause significant damage to laminate flooring.
- All flooring installations require foam underlay. Run the foam underlay in the same direction as the laminate panels. Underlay should be butted side by side
- T-moldings must be used in installations that are larger than 36' in plank length or 16' in plank width and are also required to separate rooms.
- Ensure your subfloor meets the flatness specifications (2mm/m or 0.079"/3.28").
- Never tap or force FX laminate floors during installation.
- Leave the required 10-15mm expansion space around the perimeter of the room and all other objects (eg. plumbing, toe-kicks).
- Check the click profiling, if there is wood chip or fiber inside of the click or fibers dropped inside of the click groove, without clearing the fiber chips and tap the click together may cause height difference and potential plumping.

# ELEGANCE

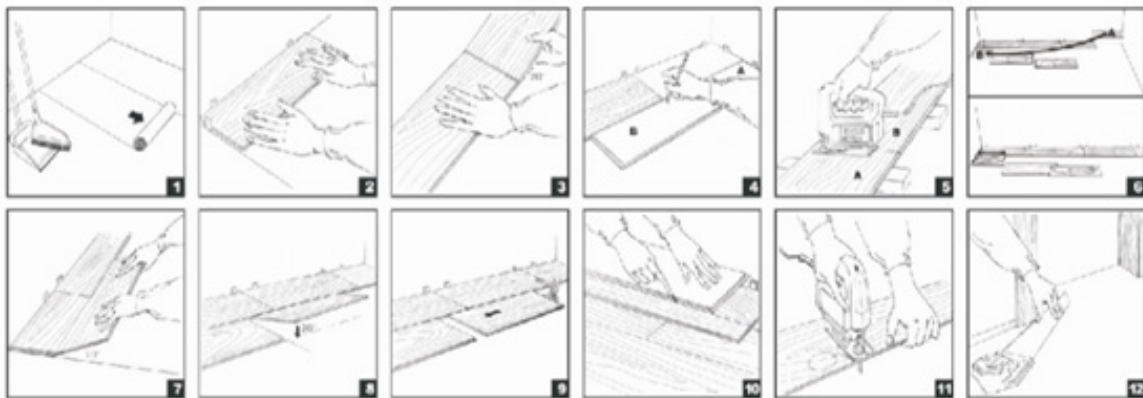
## Laminate Flooring



➤ Suggested Installation direction is vertical to the sunlight to avoid too much heat on the same flooring planks;



➤ Basic installation



### Maintenance and Care Instruction

**FX laminate floors** are among the highest performing floors available, but they are not indestructible and minor cosmetic scuffing, scratching or denting is normal wear for laminate floors. To ensure your floors perform well:

- Room ventilation is necessary after installation.
- Place walk off mats and area rugs at main traffic entrances and protective pads under furniture legs and caster chairs.
- Vacuum or dust mop to remove loose dirt or grit.
- Spot clean with water-based cleaner designed for laminate floors.
- Never flood the floor with water or cleaner; wipe up spills immediately.
- Do not use polishes, waxes or abrasive cleaners.

# ELEGANCE

## Laminate Flooring



### Warranty Information

**FX laminate floors** are warranted to the original purchaser, from date of purchase, when installed in dry interior residential applications as follows:

- The floors will be free from manufacturer defects.
- The decorative laminate surface will not wear through.
- The floor will not fade due to sunlight or electrical light.
- The floor will not stain.
- Seams will not unlock under normal use conditions.
- The floor will resist water damage from everyday spills when removed promptly and from cleaning when cared for in accordance with the **Maintenance and Care Instructions**.

### Residential Warranty

The warranty is a limited Residential Use Warranty and is subject to the following conditions:

- The floor must be installed and maintained in accordance with the instructions that accompanied the product.
- This warranty does not cover defects caused by improper sub-floor/surface preparation, improper installation, or an improper application (proper installation is assumed to include a moisture test to ensure excessive moisture does not exist in the subfloor).
- A suitable underlayment must be used for all flooring installations warranted. For installations on concrete sub-floors, below grade level or in moisture-prone areas, a suitable underlayment with moisture barrier must be used to validate the warranty.
- This warranty does not cover damage due to improper installation, cleaning, care or maintenance in a manner contrary to the instructions as provided, physical abuse to or misuse of the product, accidents causing scratching, marring, impact dents or cutting, freight damage, modification, alterations of either chemical or physical characteristics, repair or service of the product other than that performed by an authorized dealer, or any wear or damage caused by acts of God.
- Surface wear must be visible from a standing position (i.e. cover an area greater than  $\frac{1}{2}$  square inch). Gloss or sheen reduction is not surface wear and is not covered by this limited warranty.

# ELEGANCE

## Laminate Flooring



➤ This warranty does not apply to water damage caused by flooding, standing water (water remaining on the surface of the floor for longer than 30 minutes), leaking appliances or pipes, pet urine, damage resulting from water underneath the flooring, or other conditions that cause the floor to become saturated with water.

➤ This warranty does not apply to damage caused by water or moisture in the subfloor or underneath the flooring, including but not limited to damage from sub-floor hydrostatic pressure (water or moisture under the floor that is transmitted to the surface through exerted pressure) or other conditions that result in water or moisture below the floor.

➤ Planks must be checked carefully for material defects before and during installation and under sufficient lighting. If you spot what you believe to be a manufacturing defect on a particular plank DO NOT INSTALL IT; please contact your retailer within 20 days of purchase for evaluation and replacement product.

➤ Commercial used, for laminate flooring, it is not suggested to be used in heavy commercial area, in case any hotel or retail store is used, the limited warranty will cover:

- ▶ that the floor will not fade due to sun or electrical light, the floor will not stain,
- ▶ and that the decorative laminate surface will not wear through
- ▶ The floor will maintain its dimensional and fitness against load.

### Warranty Terms

In the event that you have a warranty claim, it must be made in writing within 30 days after the basis for the claim has been detected. To make a claim, contact your retailer. Proof of purchase is required. If a claim under the Warranty is approved, FX will compensate local dealer to all the repaired or replaced planks at its option, the affected flooring material. This warranty covers the value of the confirmed defective floors themselves only. FX will compensate for the full value of the products that is confirmed defective to the buyers based on it's original buying price or replace the same quantity of defective products for free to the buyer. Any Labor costs related to installation or for repair and/or replacement of defective material of product are not covered under this warranty. This warranty is not transferable. It extends to the original end-consumer.

### Warranty period

**Residential 5 years**

**Commercial: 2 years**